

Injury attendances to Fairfield General Hospital Emergency Department

January to December 2011

This report summarises recorded injury attendances to Fairfield General Emergency Department (ED) between January and December 2011.

Between January and December 2011 there were 24,622 injury attendances to Fairfield General Hospital ED. Males accounted for just over half (53%) of all attendances. The month with the highest injury attendances was July (n=2,393) with February (n=1,694) having the lowest (**Figure 1**). Seven in ten (70%) of injury attendances were recorded as other injury. Of the specified injury groups, falls (16%) accounted for the highest proportion followed by road traffic collisions (RTCs) (5%) and assault (4%) (**Table 1**).

For all injury attendances, the highest proportions were for persons aged 5 to 19 (25%) and 20 to 34 years (22%) (**Figure 2**). Almost six in ten (57%) of fall attendees were aged 65 or over. Almost half (48%) of assault attendees were aged 20 to 34 years. Nearly two-fifths (37%) of RTC attendees and almost two-fifths (37%) of deliberate self-harm (DSH) attendees were aged 20 to 34 years (**Figure 3**).

Table 2 shows the location of the incident of injury attendances. Over two-fifths (42%) of injuries occurred in the home. Over one in six (17%) of injuries occurred in a public place with smaller proportions occurring at work (6%) or at an educational establishment (5%). Nearly half (49%) of

assaults occurred in a public place. Nearly three-quarters (72%) of DSH injuries occurred at home. Over half (56%) of falls occurred in the home.

Table 3 shows the ethnicity of attendees to Fairfield General Hospital ED. Almost nine in ten (87%) were white and 5% were Pakistani.

The disposal of a patient can give an indication of the severity of the injuries sustained. Most (64%) attendees were discharged, a quarter (25%) had a referral/follow-up and 9% were admitted (**Table 4**). Over three-quarters (78%) of RTC attendees were discharged. Over a quarter (27%) of fall attendees were admitted and nearly half (49%) of burns and scalds attendees had a referral/follow-up (**Table 5**).

Table 6 shows the arrival methods of injury attendances at Fairfield General Hospital ED. Two-thirds (66%) arrived by private transport while over a fifth (22%) arrived by ambulance.

Table 7 shows assault attendances to Fairfield General ED. Over seven in ten (72%) assault attendees were male and nearly half (46%) were aged 20 to 34 years. Over a half (52%) of assault attendances arrived at the ED by ambulance.

Figure 1: Fairfield General Hospital ED: Total injury attendances by gender and month, January to December 2011

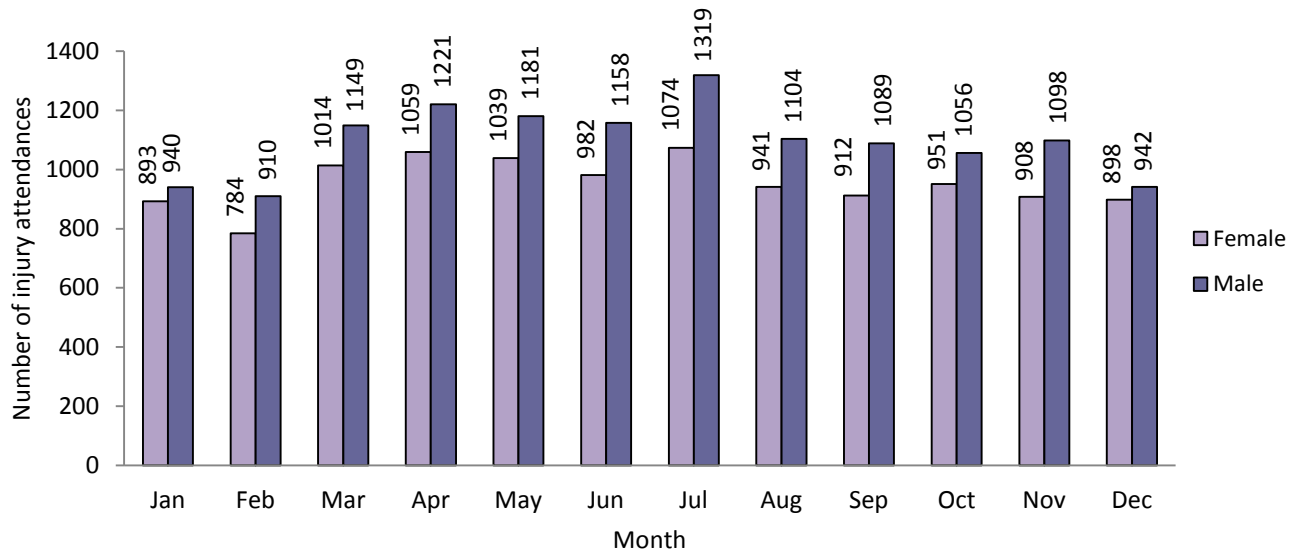


Table 1: Fairfield General Hospital ED: Total injury attendances by injury group and month, January to December 2011

Injury group	Jan	Feb	Mar	Apr	May	Jun	Jul	Aug	Sep	Oct	Nov	Dec	Total	%
Other injury	1298	1222	1613	1615	1623	1527	1736	1400	1300	1359	1371	1094	17158	70
Fall	313	250	317	360	309	351	358	322	383	344	311	406	4024	16
RTC	84	95	89	115	111	90	97	107	121	94	123	136	1262	5
Assault	65	58	50	85	96	79	97	87	83	106	117	113	1036	4
Burns and scalds	43	39	41	57	36	41	55	55	56	26	40	37	526	2
Bites and stings	18	11	33	31	26	31	27	52	28	35	10	24	326	1
DSH	12	19	20	17	19	21	23	22	30	43	34	30	290	1
Total	1833	1694	2163	2280	2220	2140	2393	2045	2001	2007	2006	1840	24622	100

Figure 2: Fairfield General Hospital ED: Total injury attendances by age group and month, January to December 2011

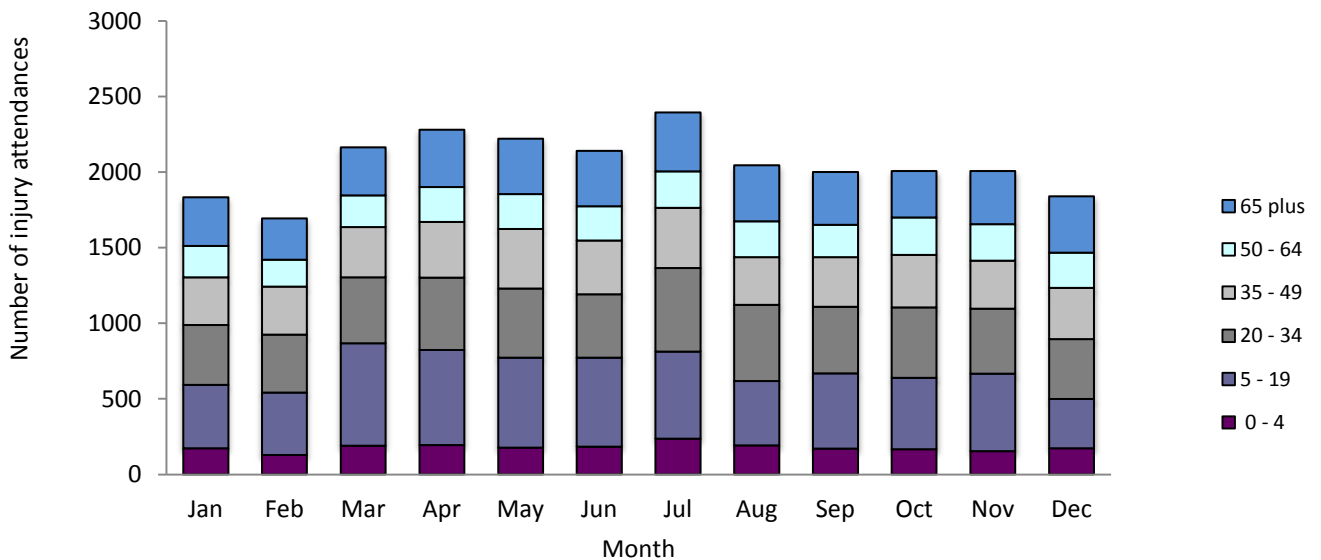


Figure 3: Fairfield General Hospital ED: Total injury attendances by age group and injury group, January to December 2011 (excluding other injury)

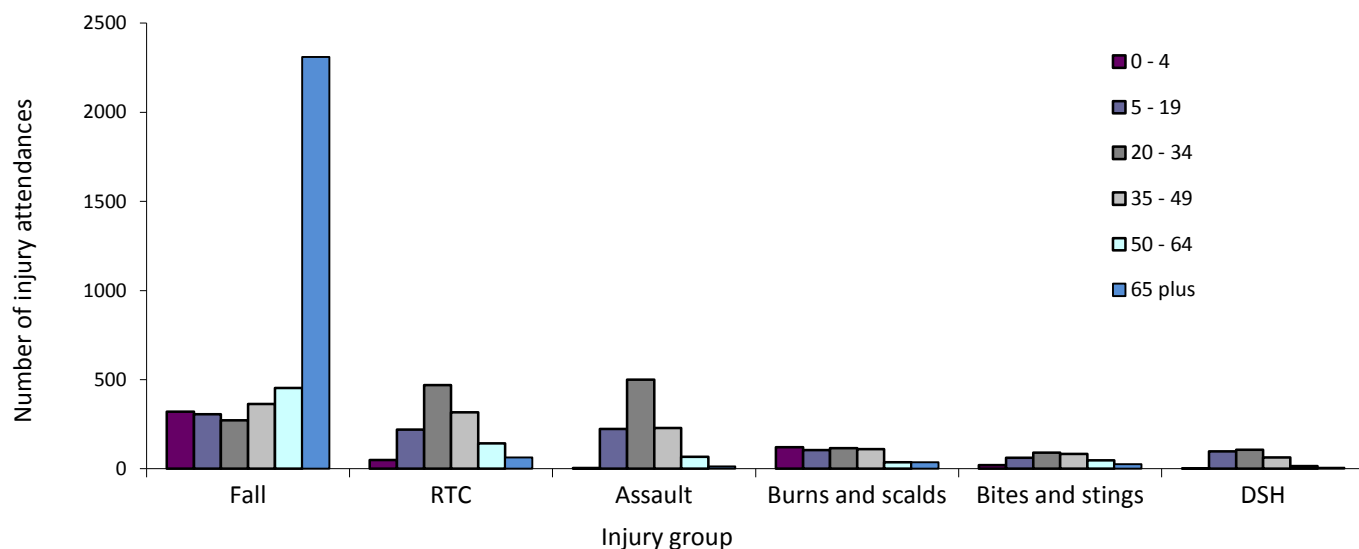


Table 2: Fairfield General Hospital ED: Total injury attendances by location of incident and injury group, January to December 2011¹²

Location	Assault		Bites and stings		Burns and scalds		DSH		Fall		Other injury		RTC		Total	
	n	%	n	%	n	%	n	%	n	%	n	%	n	%	n	%
Educational establishment	15	1	0	0	***	0	***	1	49	1	1120	7	***	0	1187	5
Home	238	23	137	42	266	51	209	72	2270	56	7089	41	16	1	10225	42
Not recorded	25	2	33	10	135	26	14	5	542	13	1788	10	18	1	2555	10
Other	199	19	36	11	45	9	39	13	269	7	3165	18	1207	96	4960	20
Public place	505	49	86	26	16	3	26	9	817	20	2700	16	13	1	4163	17
Work	54	5	34	10	***	12	***	0	77	2	1296	8	***	1	1532	6
Total	1036	100	326	100	526	100	290	100	4024	100	17158	100	1262	100	24622	100

Table 3: Fairfield General Hospital ED: Total injury attendances by ethnicity and month, January to December 2011³

Ethnicity	Jan	Feb	Mar	Apr	May	Jun	Jul	Aug	Sep	Oct	Nov	Dec	Total	%
White	1579	1468	1855	1998	1899	1865	2079	1797	1702	1732	1746	1606	21326	87
Pakistani	100	85	102	117	132	109	108	94	125	115	105	100	1292	5
Not stated	57	63	87	68	85	76	99	67	70	72	75	49	868	4
Any other ethnic group	42	30	41	38	47	30	52	37	45	40	43	33	478	2
Any other Asian background	19	12	24	21	20	19	14	11	21	7	17	14	199	1
Black	9	13	14	5	13	7	15	13	10	18	12	21	150	1
Mixed	***	11	14	11	9	14	20	13	13	17	***	7	138	1
Bangladeshi	6	5	7	8	10	6	***	***	8	***	***	***	61	0
Indian	10	5	9	7	***	8	***	***	***	0	***	***	53	0
Not known	***	***	5	***	***	***	***	5	***	***	***	***	32	0
Chinese	***	***	5	***	***	***	***	***	***	***	***	***	25	0
Total	1833	1694	2163	2280	2220	2140	2393	2045	2001	2007	2006	1840	24622	100

¹ Please note that all numbers less than five have been suppressed (***) in line with patient confidentiality and if there is only one number less than five in a category then two numbers will be suppressed at the next level.

² Percentages may not add up to a hundred due to rounding.

³ White = Irish, British, other white background; Mixed = white and black, white and Asian, mixed other; Other = any other ethnic group, any other Asian background; Black = African, Caribbean, other black.

Table 4: Fairfield General Hospital ED: Total injury attendances by method of disposal and month, January to December 2011⁴

Disposal	Jan	Feb	Mar	Apr	May	Jun	Jul	Aug	Sep	Oct	Nov	Dec	Total	%
Discharged	1159	1057	1335	1432	1382	1396	1544	1291	1402	1371	1225	1162	15756	64
Referral/follow-up	482	453	625	570	612	534	614	515	395	438	564	441	6243	25
Admitted	173	165	188	246	203	197	212	208	177	176	192	202	2339	9
Other	19	19	15	32	23	13	23	31	27	22	25	35	284	1
Total	1833	1694	2163	2280	2220	2140	2393	2045	2001	2007	2006	1840	24622	100

Table 5: Fairfield General Hospital ED: Total injury attendances by method of disposal and injury group, January to December 2011

Disposal	Assault		Bites and stings		Burns and scalds		DSH		Fall		Other injury		RTC		Total	
	n	%	n	%	n	%	n	%	n	%	n	%	n	%	n	%
Discharged	615	59	219	67	257	49	138	48	2067	51	11472	67	988	78	15756	64
Referral/follow-up	207	20	94	29	226	43	52	18	799	20	4661	27	204	16	6243	25
Admitted	113	11	***	3	***	6	62	21	1098	27	975	6	48	4	2339	9
Other	101	10	***	1	***	2	38	13	60	1	50	0	22	2	284	1
Total	1036	100	326	100	526	100	290	100	4024	100	17158	100	1262	100	24622	100

Table 6: Fairfield General Hospital ED: Total injury attendances by mode of arrival and month, January to December 2011

Arrival mode	Jan	Feb	Mar	Apr	May	Jun	Jul	Aug	Sep	Oct	Nov	Dec	Total	%
Private transport	1170	1112	1504	1512	1483	1415	1575	1373	1322	1297	1304	1130	16197	66
Ambulance	426	383	440	476	450	467	489	442	445	463	461	497	5439	22
Unknown	86	81	46	114	119	110	119	84	94	99	86	85	1123	5
Taxi	73	56	72	76	93	64	96	60	52	61	55	55	813	3
Public transport	27	25	42	47	30	36	45	31	30	32	45	19	409	2
Foot	24	19	32	39	24	25	39	28	28	27	25	18	328	1
Police	13	8	12	9	10	11	16	10	14	14	13	18	148	1
Work transport	7	6	6	***	***	7	9	10	7	9	7	10	84	0
Other	***	***	***	***	***	***	5	***	***	5	***	***	48	0
Unknown	***	***	***	***	***	***	0	***	***	0	***	***	33	0
Total	1833	1694	2163	2280	2220	2140	2393	2045	2001	2007	2006	1840	24622	100

Table 7: Fairfield General Hospital ED: Total injury and assault attendances by gender, mode of arrival and age group, January to December 2011^{*}

Injury type	Assault attendees		All injuries % (n=24,622)
	n	%	
Gender			
Female	264	28	47
Male	772	72	53
Mode of arrival			
Ambulance	514	52	22
Other	522	48	78
Age group			
0 - 4	5	0	9
5 - 19	223	22	25
20 - 34	499	46	22
35 - 49	228	23	17
50 - 64	67	7	11
65 plus	14	2	17

* Percentages may not add up to 100 due to rounding.

Author: Ian Warren, Published: February 2012

For further information contact: Centre for Public Health, Research Directorate, Liverpool John Moores University,
2nd Floor, Henry Cotton Building, 15-21 Webster Street, Liverpool, L3 2ET

Tel: 0151 231 4513 or Email: lj.warren@ljamu.ac.uk Website: www.tiig.info (data requests should be made through the website)

⁴ Admitted=admitted to ED bed/became a lodged patient of the same health care provider; Discharged=discharged - did not require any follow-up treatment; Referred/follow-up =discharged - follow-up treatment to be provided by GP, referred to ED clinic, referred to fracture clinic, referred to other out-patient clinic, transferred to other health care provider, referred to other health care professional; Other=died in department, left department before being treated, left department having refused treatment, other.